

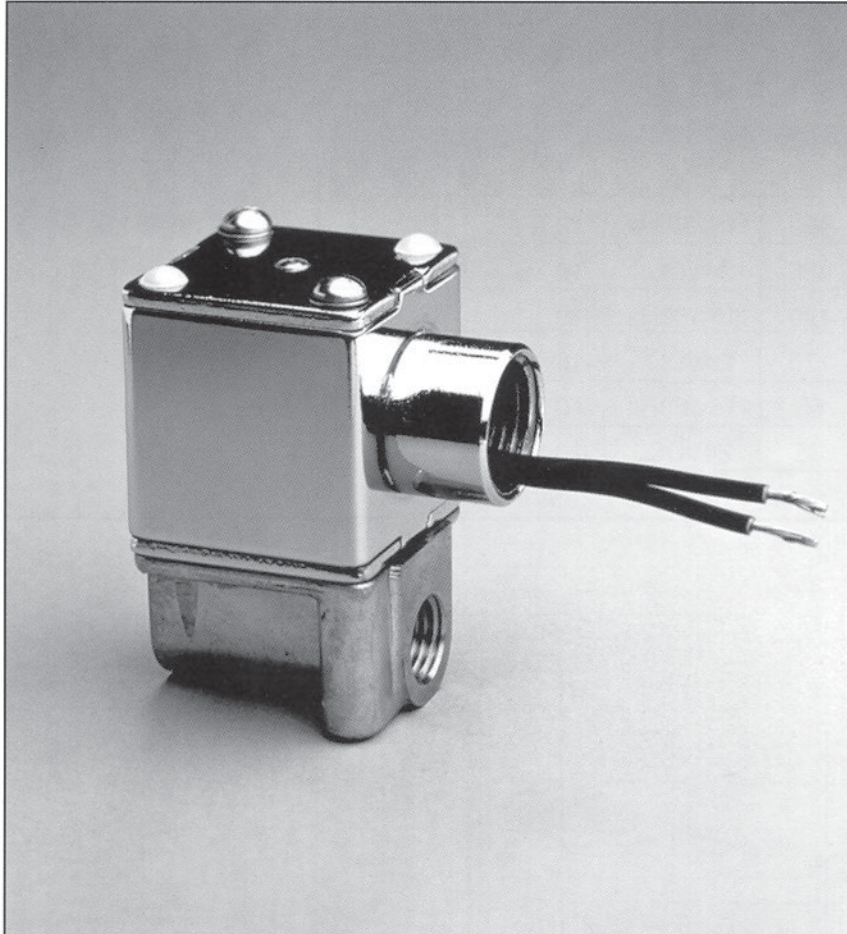
# 1

Valcor Scientific

# Multi-Purpose Solenoid Valve

2-Way, Normally Closed

Model: SV62



## APPLICATIONS

Model SV62 is suitable for a broad range of light industrial applications, both new and retrofit. Typical applications employing the Model SV62 include:

- Water control in automated sinks.
- Fuel shut-off in various industrial markets.
- Oxygen control in various medical applications.

## FEATURES

- Direct acting design with bubble-tight shut-off.
- No minimum pressure required for operation.
- Rugged construction with forged brass body and stainless steel trim.

## INTRODUCTION

Valcor Scientific, a Division of Valcor Engineering, has designed and engineered rugged, reliable solenoid operated valves for more than 50 years.

The SV62 Model was specifically engineered for long and reliable general industrial service with non-corrosive liquids, gases and vapors.

## DESCRIPTION

The SV62 Series are direct acting, two-way, normally closed poppet solenoid valves. When de-energized, the plunger is held down on

the valve seat by means of a spring load. When energized, the plunger is lifted from the seat, allowing the media to flow through the valve.

Ruggedly built for long life and reliable service, the SV62 Series requires no minimum pressure for operation.

The SV62 Series is available in three orifice sizes.

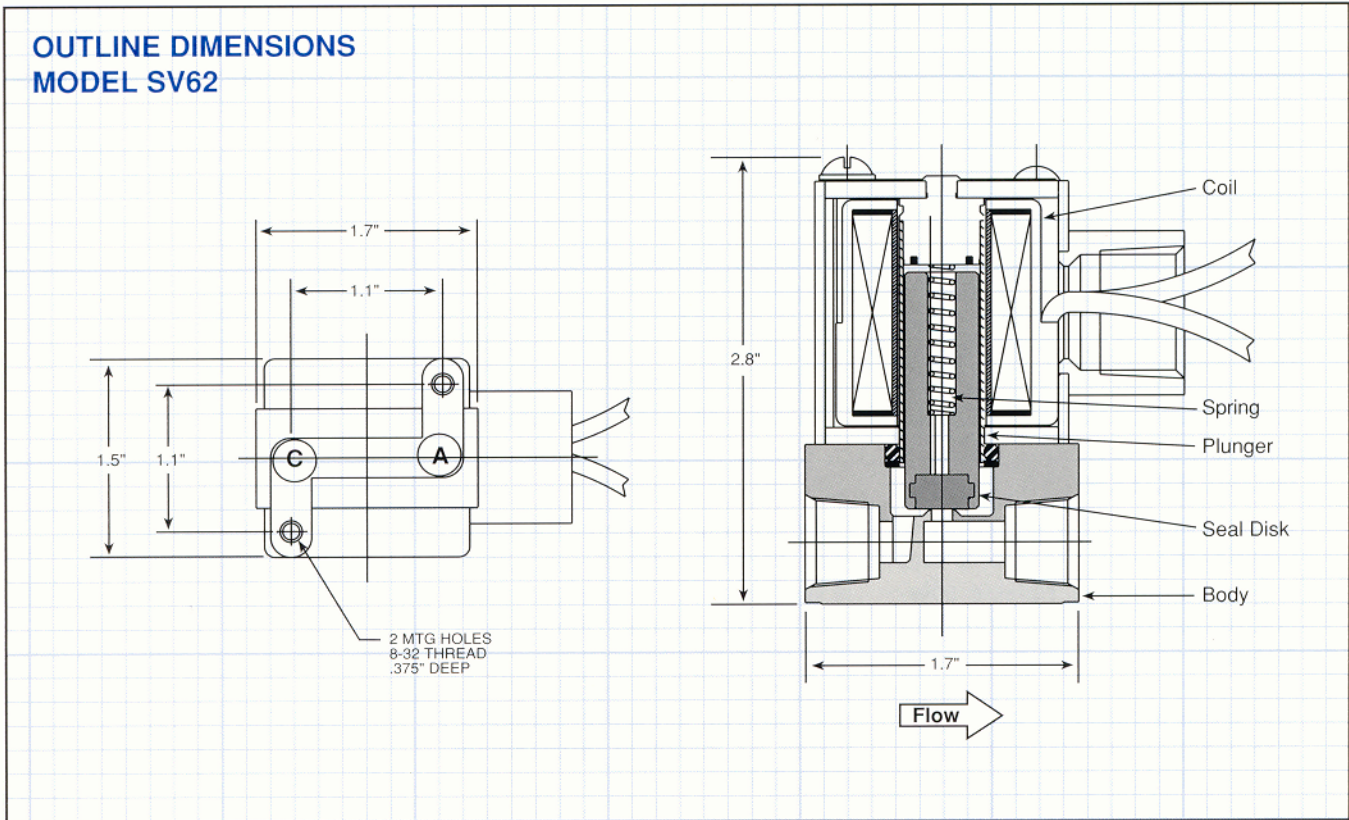
# SPECIFICATIONS

- Size: ..... 2.8" H x 1.7" W x 1.5" D
- Weight: ..... 14.8oz. (420 g)
- Port Connection: ..... 1/4" NPT
- Materials in Contact with Fluid: ... Brass, Stainless Steel,  
Silver (AC valves only), Buna-N
- Coil Construction: ..... UL Class B w/18" Leads
- Power: ..... 10 Watts (24 VDC or 115/60Hz)
- Special Requirements: ..... Consult Factory

Teflon® is a registered trademark of the DuPont company

# PERFORMANCE SPECIFICATIONS

Model Number	Orifice Size	C <sub>v</sub>	PSIG		Coil	Watts	Minimum Operating Pressure (PSIG)
			Gas	Liquid			
SV62C19P1	1/16"	0.10	470	450	115v/60Hz	10	0
SV62C56P1	1/16"	0.10	450	425	24VDC	10	0
SV62C19P3	1/8"	0.30	200	190	115v/60Hz	10	0
SV62C56P3	1/8"	0.30	185	175	24VDC	10	0
SV62C19P6	1/4"	0.70	65	60	115v/60Hz	10	0
SV62C56P6	1/4"	0.70	55	35	24VDC	10	0



**Valcor Scientific**

**Valcor Engineering Corporation®**

2 Lawrence Road • Springfield, New Jersey 07081

973-467-8400 • Fax: 973-467-9592

scientific@valcor.com • www.valcor.com